



School of Psychology
Foyer

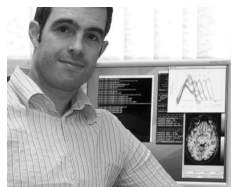
Photo: ds

More news from the School of Psychology

Welcome to the 2nd issue

Welcome to the second issue of the re-vamped Psychology Newsletter. Thank you to all the students and members of staff who contributed items to the first newsletter and have sent me news and updates for this current issue. Keep your news coming...

denis.schluppeck@nottingham.ac.uk



Dr Denis Schluppeck is an RCUK Academic Research Fellow. His research interests include sensory neuroscience and neuroimaging. He edits this newsletter.

Learning Community Forum (LCF)

The first meeting of the new Learning Community forum took place on Wednesday 8th December 2010. The aim of this forum is to encourage communication between students (undergrad, graduate) and members of staff; at the first meeting of this forum, the issues discussed included seminars for undergraduate students, dissertation projects, the use of focus groups for feedback from the student body, the Educational Psychology module, naming of the Social Space, and several other topics. The forum was chaired by the student representative. For more information on the LCF, check out the pages on the University's *workspace*.

workspace.nottingham.ac.uk/display/LCForum/Psychology



Dr Jonathan Stirk is a Lecturer at the School. Many students will have met him in his role as Director of Teaching.



Roger Newport is an Associate Professor at Psychology. He works on sensorimotor integration and also coordinates the Learning Community Forum for Psychology.

Social Space Naming Competition

The Learning Community Forum decided to open up the naming of the School of Psychology's Social Space for competition. Send (clever) suggestions for names by e-mail with the subject *Social Space Competition* to

roger.newport@nottingham.ac.uk

New colleague

The School welcomes Dr Marios Philiastides who will be joining the School of Psychology as a Lecturer in May 2011. Dr Philiastides's research interests are in the neural correlates of perceptual and reward-based decision making. He is currently a research scientist at the Max Planck Institute for Human Development in Berlin.

<http://www.mphiliastides.org/>

Curtin call

Congratulations to Dr Martin Hagger who will be moving to take up a chair at Curtin University in Perth, Australia. Dr Hagger held the position of Reader in Health Psychology since his arrival at the University of Nottingham in 2006. All the best wishes for a successful start down-under.

psych.curtin.edu.au

Postgrad & Research Fellows ...

by *Claire O'Malley*

The Graduate School is a unique facility for postgraduate students and early career researchers here at Nottingham, so I hope you've had the chance to make contact and benefit from the training and social resources on offer.

If you have any issues or suggestions about how the University of Nottingham supports you in your research studies and professional development, please get in touch.

Claire.O'malley@nottingham.ac.uk

Claire O'Malley is Professor of Learning Science and Dean of the Graduate School

Research Staff Community

Newly returned Psych researcher, Alexa Spence, is undertaking the role of representing our Psychology researcher community – postdocs, research fellows and associates, this is you! She is aiming to get researchers together to feedback on current university and school issues and to raise any other issues that exist or arise for the researcher community (e.g. funding, resources, prizes etc.). As a start, Head of School Researcher feedback meetings will be organised approximately twice yearly where our head of school, Paul McGraw, will update us on school events and plans and we have the opportunity to discuss these and raise any other



Alexa Spence is a Horizon Translational Fellow. She also acts as a representative for graduate and post-graduate researchers in the School.

points for discussion. However, there is also the possibility of organising other more specific training or events – please do contact Alexa if you are interested in getting involved, if you have any issues you want to raise or if you have any ideas for the development of this community.

alexa.spence@nottingham.ac.uk

Mayfest event with IWHO

The University is organizing another Alumni day (*Mayfest* on 7/8 May 2011) and the School of Psychology is planning some events to go along with the University-wide programme for friends, as well as current and former students and members of staff. Check out the webpage for more details.

“Join the Vice-Chancellor Professor David Greenaway as the University throws open its doors and welcomes alumni and friends onto campus.”

www.nottingham.ac.uk/supportus/events/mayfest.aspx

IWHO Event for Professional Careers

The Institute of Work, Health and Organisations (IWHO) will be organizing an event for all third year Psychology students. The talk and evening reception (**7 February 2011, 6pm-7pm, Psychology Social Space**) is aimed at giving students an overview of the professional careers and study opportunities in occupational, clinical, forensic and educational Psychology. Tutors will be present. Everyone welcome, so come and hob-nob and find out more about Career options and opportunities.

www.nottingham.ac.uk/iwho



Cupcake Periodic table at the Manchester Science Festival (Photo courtesy of MadLabUK, flickr, CC BY-SA 2.0)

Manchester Science Festival

Catherine Preston and Roger Newport organized a popular workshop at the Manchester Science Festival, which took place across the city between 23rd and 31st October 2010. In a successful session called ‘Seeing is believing’ they organized demonstrations of illusions for everyone – from children to adults.

“Art and science combine to allow you to explore the science behind out of body experiences. Participate in real scientific research in to how our minds know what and where our own body is and ways the mind can be tricked. Create your own false hands and see if you can trick your mind into believing they are your own hands.” (from Programme on website).

The Manchester Science Festival will be happening again – from 22-30 October 2011; check out the website for more details.

www.manchestersciencefestival.com

Brain Awareness Week

March 14-20, 2011 is Brain Awareness Week. Dr Lucy Cragg will be organizing several events on the University Park Campus.



14-20 March is Brain Awareness Week

Brain Awareness week is organized by the Dana Foundation – it is a global campaign to increase public awareness about progress in brain research and the benefits it brings to society. If you are interested in learning more about Brain Awareness Week or for more details on the events planned at the University of Nottingham, contact Lucy Cragg.

Dr Lucy Cragg is an RCUK Academic Research Fellow at the School. She is also putting together the programme for Brain Awareness Week.



lucy.cragg@nottingham.ac.uk
<http://www.dana.org/brainweek/>

Long Service Award

Congratulations to Professor Geoffrey Underwood for his Long Service Award from the University of Nottingham. At a ceremony on the 19th of January 2011 the Vice-Chancellor David Greenaway presented Geoff with the award to mark over 38 years of service to the University of Nottingham. Geoff joined the School of Psychology in September 1972.



Geoff Underwood with Vice-Chancellor David Greenaway

PsychoPy workshop

Jon Peirce gave a workshop on PsychoPy at the meeting of Mathematical, Statistical and Computing Section (MSCS) of the British Psychological Society, which was held at Nottingham Trent on 13 and 14 December 2010. Jon is also the creator of PsychoPy, “an open-source application to allow the presentation of stimuli and collection of data for a wide range of neuroscience, psychology and psychophysics experiments.”

www.psychopy.org

Jon Peirce is an Associate Professor in Psychology. His research interest are in Visual Neuroscience.



Acknowledgements

Thanks to Marie Calladine, Charlotte Langham, and Martin Lockey for comments on the newsletter (and spotting a few errors) and arranging printing. Thanks also to Viv Kirk for tracking down the photo of the Long Service Award Ceremony.

Made with Apple Pages using *Baskerville* and **Helvetica Neue**; printed at **alphagraphics** in Nottingham.

Malaysia Campus News

contributed by Neil Mennie

The School of Psychology at the University of Nottingham Malaysia Campus (UNMC) was opened in September 2009. Three full time postgraduate students enrolled in the first year. All are Malaysian, although students from anywhere in the world, including the UK, are welcome. Dhanya, Sheryl and Crystalle are supervised by Peter Mitchell, Neil Mennie and Lizzy Sheppard respectively.

New lecturer

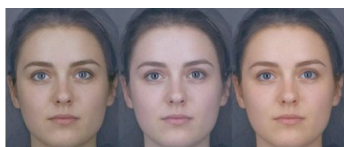
From February 2011, Malaysia Campus will have a new lecturer. Dr. Kirsten McKenzie will be joining the faculty of the School of Psychology. Kirsten completed her PhD in the school of Psychology at Nottingham and held a Postdoctoral Fellowship at Manchester for the following three years before taking up her new post.

Looking good with Greens

Research from Dr Ian Stephen (Malaysia Campus) has made headlines, being reported in over 400 newspapers, magazines, radio and TV stations around the world, including The Times, The Independent, The Discovery Channel and BBC Radio Nottingham. The research suggests eating vegetables gives you a healthy tan. It showed that eating a healthy diet rich in fruit and vegetables gives you a healthier golden glow than the sun.

Dr Stephen and his team in the Perception Lab found that people who eat more portions of fruit and vegetables per day have a more golden skin

colour, thanks to substances called carotenoids. Carotenoids are antioxidants that help soak up damaging compounds produced by the stresses and strains of everyday living, especially when the body is combating disease. Responsible for the red colouring in fruit and vegetables such as carrots and tomatoes, carotenoids are important for our immune and reproductive systems.

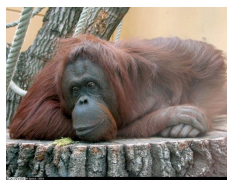


The face in the middle shows the woman's natural colour. The face on the left shows the effect of sun tanning, while the face on the right shows the effect of eating more carotenoids. Participants thought the carotenoid colour looked healthier.

Dr Stephen said: "We found that, given the choice between skin colour caused by suntan and skin colour caused by carotenoids, people preferred the carotenoid skin colour, so if you want a healthier and more attractive skin colour, you are better off eating a healthy diet with plenty of fruit and vegetables than lying in the sun."

How do orangutans move their eyes?

Dr. Neil Mennie (Malaysia Campus) has been awarded a small grant from the Malaysian Ministry of Higher Education (MOHE) to investigate the eye movements of captive bred Orangutans. In the past, Neil has looked at the eye movements of humans in natural tasks such as tea making, sport and model building as part of his research in



Orangutan (*Pongo pygmaeus*) lazying around

active vision, but this is his first project on vision in great apes. Entitled "An investigation into the predictive use of gaze by Orangutans (*Pongo pygmaeus*) during everyday actions such as locomotion and feeding", the project is a collaboration with the National Zoo of Malaysia (Zoo Negara). The Bornean orang-utan is

an endangered species while Sumatran Orangutans are critically endangered. If successful, in addition to yielding invaluable data on their visual strategies during natural actions, Neil hopes the project will assist in their conservation by increasing public awareness of the similarities between these animals and humans.

neil.mennie@nottingham.edu.my

Malaysia campus awards

by Peter Mitchell

Becky Wong was awarded the Matriculation Prize, which was a prize awarded to the student who had the highest entry grades onto the BSc Psychology. Jahizah won the prize for best second year student. She achieved this by gaining the highest average grade across all exams and coursework, and across all subjects, including electives. Becky enrolled 2010 and Jahizah enrolled in 2009.



2nd year student Prize for Jahiza Binti Mohd Ali



Matriculation Prize for Wong Pek Kei



The University of Nottingham

UNITED KINGDOM • CHINA • MALAYSIA